

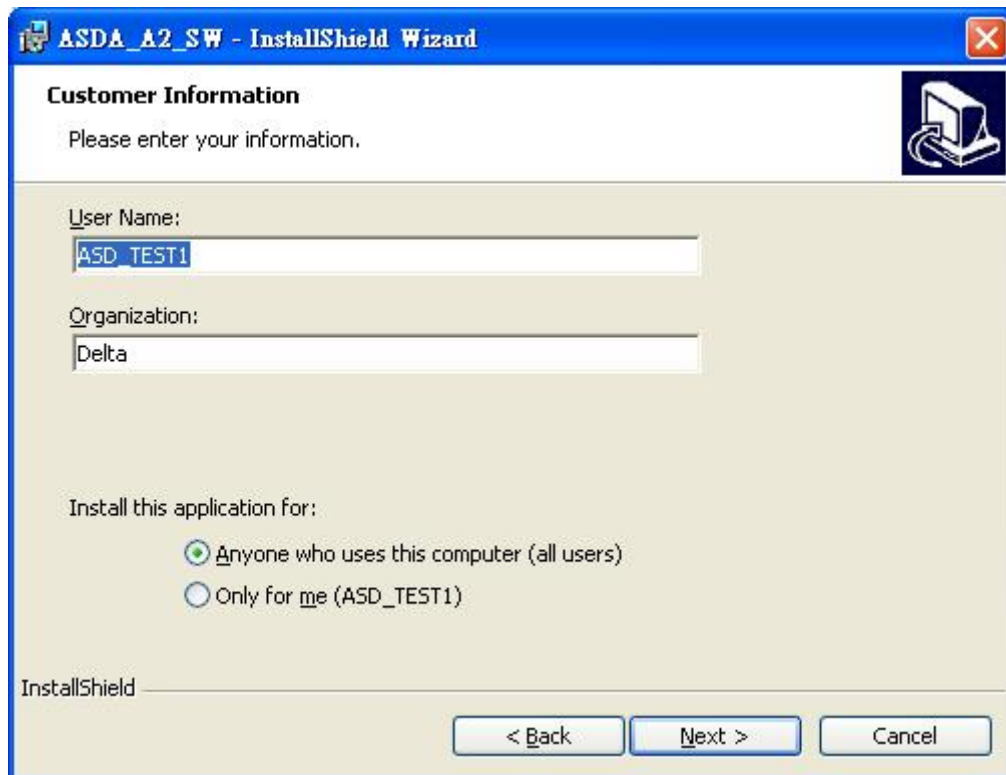
步驟一：點選 setup，進入安裝。



步驟二：開始安裝，請按下 Next



步驟三：輸入使用者資訊



The screenshot shows the 'Customer Information' screen of the 'ASDA_A2_SW - InstallShield Wizard'. The window has a blue title bar with the text 'ASDA_A2_SW - InstallShield Wizard' and a close button. Below the title bar, the text 'Customer Information' is displayed in bold, followed by the instruction 'Please enter your information.' To the right of this text is an icon of a computer monitor with a circular arrow. The main area contains two text input fields: 'User Name:' with the text 'ASD_TEST1' and 'Organization:' with the text 'Delta'. Below these fields, the text 'Install this application for:' is followed by two radio button options: 'Anyone who uses this computer (all users)' (which is selected) and 'Only for me (ASD_TEST1)'. At the bottom left, the text 'InstallShield' is visible. At the bottom right, there are three buttons: '< Back', 'Next >', and 'Cancel'.

ASDA_A2_SW - InstallShield Wizard

Customer Information

Please enter your information.

User Name:
ASD_TEST1

Organization:
Delta

Install this application for:

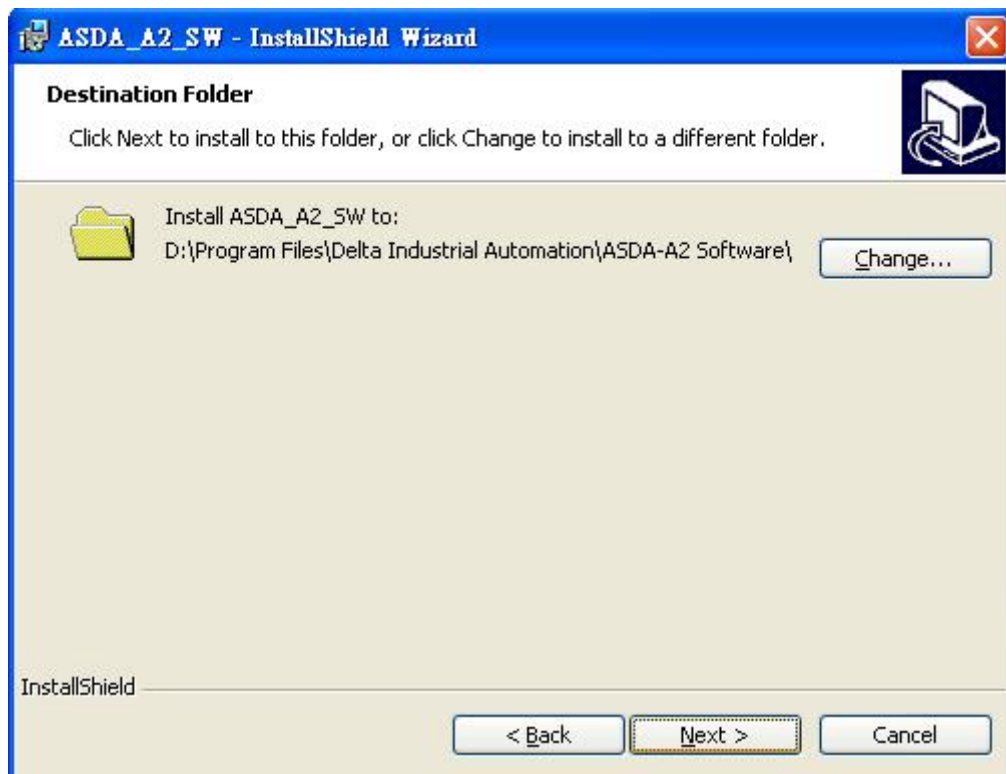
☒ Anyone who uses this computer (all users)

☐ Only for me (ASD_TEST1)

InstallShield

< Back Next > Cancel

步驟四：選擇安裝路徑，建議使用者如無特需求，盡量不要更改安裝路徑。



The screenshot shows the 'Destination Folder' screen of the 'ASDA_A2_SW - InstallShield Wizard'. The window has a blue title bar with the text 'ASDA_A2_SW - InstallShield Wizard' and a close button. Below the title bar, the text 'Destination Folder' is displayed in bold, followed by the instruction 'Click Next to install to this folder, or click Change to install to a different folder.' To the right of this text is an icon of a computer monitor with a circular arrow. The main area contains a folder icon and the text 'Install ASDA_A2_SW to: D:\Program Files\Delta Industrial Automation\ASDA-A2 Software\'. To the right of this text is a 'Change...' button. At the bottom left, the text 'InstallShield' is visible. At the bottom right, there are three buttons: '< Back', 'Next >', and 'Cancel'.

ASDA_A2_SW - InstallShield Wizard

Destination Folder

Click Next to install to this folder, or click Change to install to a different folder.

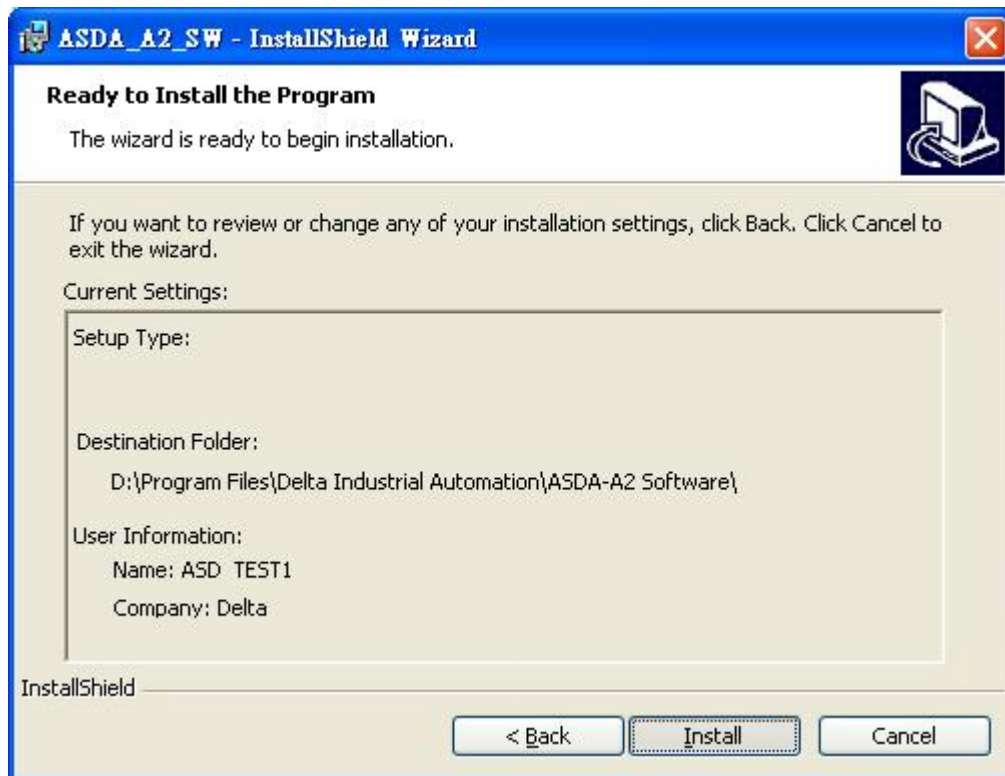
Install ASDA_A2_SW to:
D:\Program Files\Delta Industrial Automation\ASDA-A2 Software\

Change...

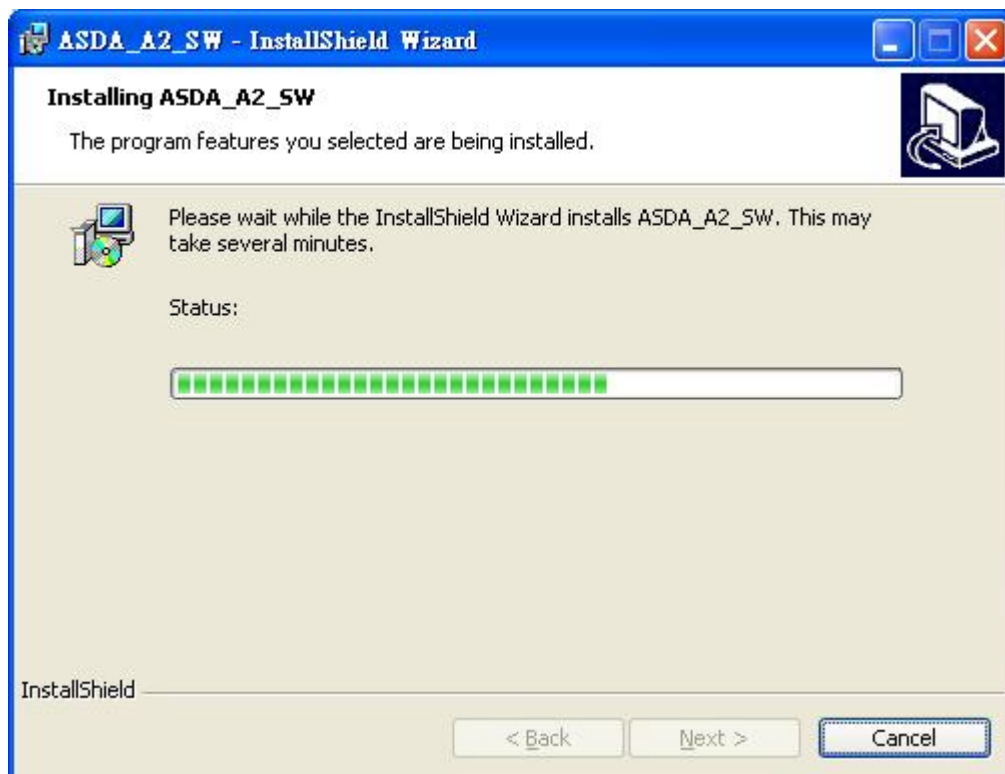
InstallShield

< Back Next > Cancel

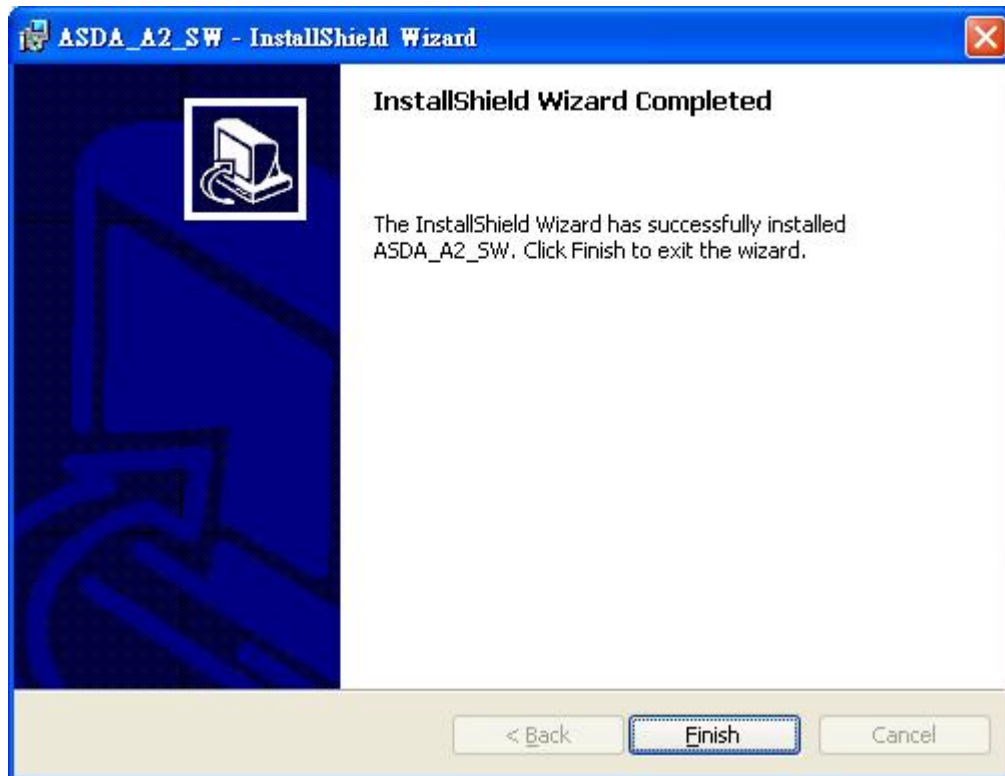
步驟五：確定開始安裝



步驟六：安裝執行中



步驟七：安裝結束



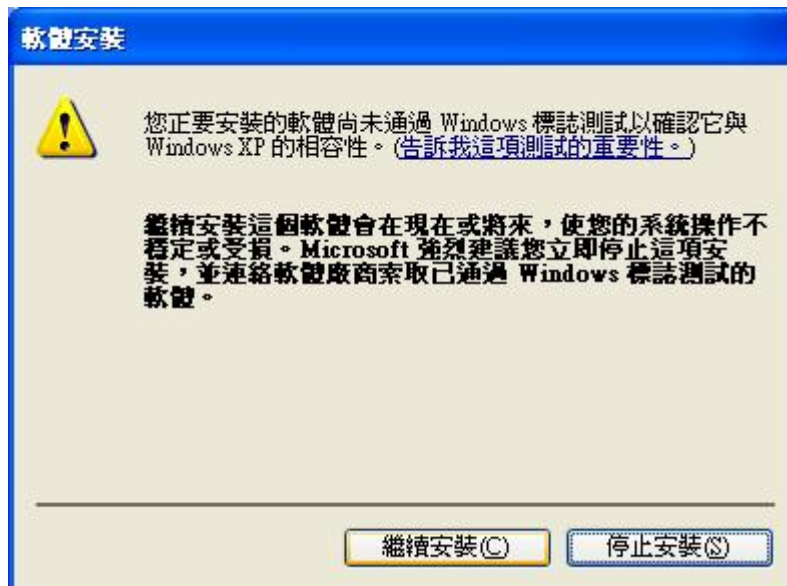
第一次執行時會跳出下列提示視窗，請使用者拔除 USB 線，按下確定鍵後，在插上 USB 線。



插上 USB 線後，軟體會偵測到新 USB 的裝置時，會自動安裝 USB 驅動程式，才能夠使用 USB 與伺服器通訊。



請按下 “繼續安裝”，如不安裝則無法此用 USB 與伺服通訊。



請選擇 “自動安裝軟體(建議選項)”，軟體會自動偵測驅動程式路徑。



開始安裝 USB 驅動程式，安裝過程會花一段時間，請耐心等待!



請注意!

1. 軟體會依據使用者電腦的設定狀況會跳出上述安裝過程重複 2~4 次，請使用者依序操作上述過程，切勿取消動作，否則會造成驅動程式安裝不完整，無法使用 **USB** 通訊。
2. 安裝過程，安裝搜尋時間可能會花一段時間，請使用者耐心等待。